

T&L Tooling

4774 S. Holladay Blvd.
Holladay, UT 84117

sales@tltooling.com

801-468-2228 www.tltooling.com

SPECIAL OFFER!

20% OFF

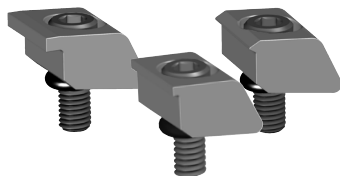


Some Exclusions Apply

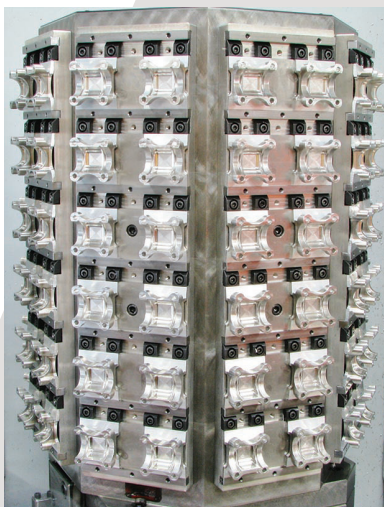
Reducing Cost Per Piece = Advantage YOU!

Pitbull® Clamps

**Strongest,
Lowest Profile Clamp**

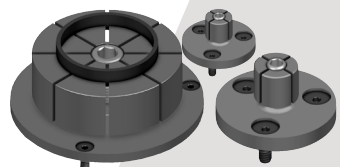


- ▶ Extremely low bite
- ▶ Positive down force
- ▶ High strength A2 Tool Steel virtually eliminates rip-out
- ▶ Simple, sturdy, high quality design and components
- ▶ Great option with hydraulic cylinders
- ▶ Virtually eliminate lost work

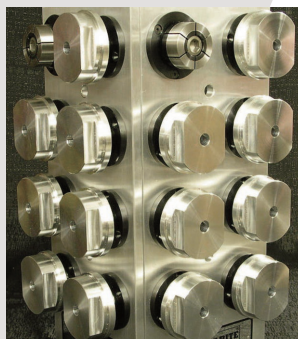
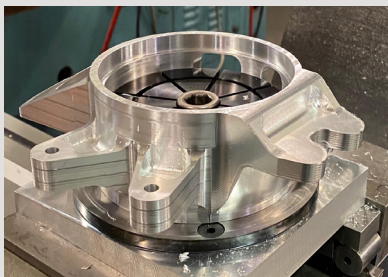


ID Xpansion™ Clamp

Ideal for Secondary Operations on Lathe Parts

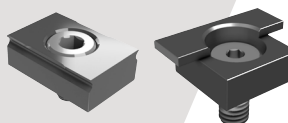


- ▶ Low profile
- ▶ Ideal for secondary operations on lathe parts
- ▶ Easily machined to size on lathe or mill
- ▶ Excellent for palletized setups
- ▶ Allows more parts per workcube or fixture plates
- ▶ Heat-treated and coated screw for long life
- ▶ Clamp body made of mild steel for machinability
- ▶ Tighten with hex key or hydraulic pull cylinders
- ▶ Longer screws available for hydraulic applications

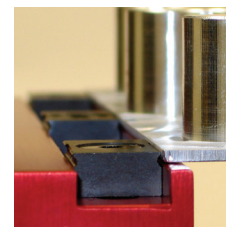


TalonGrip™

Increase Functionality on Standard Vises



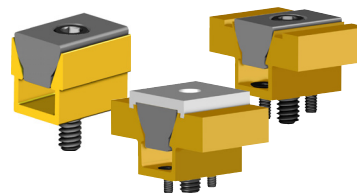
- ▶ Grip low - save on material costs
- ▶ Positive down force
- ▶ Simple bolt on system that will allow you to perform aggressive machining operations
- ▶ Ideal for small lot sizes, difficult applications or proto-type work
- ▶ Jaws are not heat-treated to allow for custom modifications, grips are made from S7.



Scan QR code for more information about all Mitee-Bite Products!

Uniforce® Clamps

Reduce Tool Change Time - Best for High Density



- ▶ Increases production
- ▶ Minimizes tool changes
- ▶ Holds two parts with equilateral clamping action
- ▶ Ideal for clamping flat or round workpieces
- ▶ Reduces wasted space
- ▶ Easily mated to hydraulic pull cylinders
- ▶ Ideal for pallet changers



WORKHOLDING SPECIALISTS

Free Design Consults
800-543-3580 MiteeBite.com

**Contact us today to
place your order!**

OFFER ENDS 8/31/25